

APPENDIX G
LAND SURVEYOR'S REPORT



Hill, Jamison and Associates, Inc.

Engineering and Surveying



40° 53'11.59" N
111° 53'02.88" W



November 3, 1994

Science Application International Corporation
1710 Goodrich Drive
McClellan, VA 22102

Att: John Carter
Mail Stop T-2-2-4

Dear John,

Please find enclosed the results of our survey work for monitoring well locations in the Tooele Army Depot, South Area. Enclosed with this letter are the following:

1. Tabulation of Final Survey data.
2. Level loop field notes.
3. Closure logs for GPS Survey data.
4. Horizontal and vertical control information sheets.
5. Mylar drawings of survey results.
6. 3 1/2 inch diskette containing an ASCII file of tabulated data.

Please note that North American datum 1983 (NAD 83) is by definition in meters. All results giving state plane locations are in meters as per the NAD 83 definition. Also note that the level loop field notes were originally reduced in North America Vertical Datum 1988 (NAVD 88). These elevations are adjusted in the final results to the National Geodetic Vertical Datum 1929 (NGVD 29) as per the project specifications. NGVD 29 is by definition in feet and all elevations in the final survey data are listed as feet.

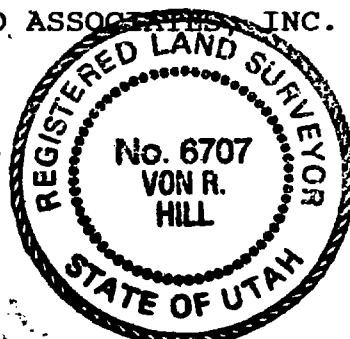
If there are any questions concerning this data please feel free to contact me.

Very Truly Yours,

HILL, JAMISON AND ASSOCIATES, INC.

VON R. HILL, L.S.
President

enclosure



Job ID : SAI
Job name : SAIC - SOUTH DEPOT SURVEY
Reference : HORIZONTAL
NORTH AMERICAN DATUM 1983
STATE PLANE COORDINATE SYSTEM
UTAH CENTRAL ZONE
NORTHING & EASTINGS
LISTED IN METERS

VERTICAL
NATIONAL GEODETIC VERTICAL DATUM 1929
ELEVATIONS LISTED IN FEET

Field surveyor : Von R. Hill, L.S. / Dean Mortenson, L.S.
Computer operator : Dean P. Jamison
Date printed : 03/11/94 10:25am

Pt No.	Code	Northing	Easting	Elevation	Description
1	AJAX	2214768.117	423763.115	5061.080	
2	S113	2219784.417	428919.477	5231.000	HUB & TACK ELEV 5229.04
3	S114	2219807.327	428893.363	5230.810	HUB & TACK ELEV 5229.03
4	S115	2219830.576	428867.177	5232.660	HUB & TACK ELEV 5230.79
5	S116	2219901.786	429015.009	5238.080	HUB & TACK ELEV 5235.01
6	V175	2222818.161	422739.190	5023.980	
7	W175	2221289.749	422995.868	5029.080	

A
10-13-94

BREEZY & OVERCAST

D. MORTENSON
D. FALLICK

T.A.D. MONITORING
WELL ELEV.

N 1 2 ZIESS LEVEL
ADJUSTED 10-13-94

10-14-94 WINDY
10-

STA	+	HI	-	ELEV				
BM				5032.89				
	2.13	35.02						W-175
T.P. BM #1A			6.66	28.36				PAINTED ROCK
	6.81	35.17						
BM			2.27	32.90	+0.01 Exc			W-175
BM #1A				5028.34				PAINTED ROCK
	5.03	33.39						
TP			0.69	32.70				
	5.35	38.05						
TP 1			3.70	34.35				
	5.35	39.70						
TP 2			5.21	34.49				
	5.19	39.68						
TP 3			5.38	34.30				
	5.52	39.82						
TP 4			5.21	34.61				
	4.89	39.50						
TP 5			5.16	34.34				
	5.24	39.58						
TP 6			5.25	34.33				
	4.99	39.32						
TP 7			5.14	34.18				
	5.20	39.38						

3/4

STA	+	HI	-	ELEV					
		5039.38							
TP 8			4.93	34.45					
	5.88	40.33							
TP 9			2.19	38.14					
	6.85	44.99							
TP 10			2.11	42.02					
	8.12	51.00							
TP 11 B.M.			1.97	49.03					
	1.81	50.84							
TP 11			7.97	42.87	.88				
	2.13	45.00							
TP 9			6.87	38.13	.14				
	2.38	40.51							
TP 8			6.07	34.44	.45				
	4.86	39.30							
TP 7			5.13	34.17	.18				
	5.16	39.33							
TP 6			4.99	34.34	.33				
	5.25	39.59							
TP 5			5.24	34.35	.34				
	5.06	39.41							
TP 4			4.80	34.61	.61				
	5.03	39.64							
TP 3			5.34	34.30	.30				
	5.42	39.72							

STA	+	HI	-	ELEV					
		5039.72							
TP 2			5.24	34.48	.49				
	5.15	39.63							
TP 1			5.29	34.34	.35				
	3.74	38.08							
TP			5.39	32.69	.32.70				
	1.23	33.92	5.56						
BM #1A			5.56	28.36	28.36				
				EOC	0.00				
TBM	10-14-94								
TP 11				5049.03					
	8.06	57.09							
TP 12			0.61	56.48					
	9.29	65.77							
TP 13			0.43	65.34					
	10.63	75.97							
TP 14			0.67	75.30					
	10.21	85.51							
TP 15			1.02	84.49					
	8.86	93.35							
TP 16			1.52	91.83					
	9.45	5101.28							
TP 17			0.70	00.58					
	7.15	09.73							
TP 18			1.03	08.70					
	9.40	19.10		10.76					
		20.16							

STA	+	HI	-	ELEV					
		5110.10							
TP 19			0.55	17.55					
	9.24	26.79							
TP 20			0.64	26.15					
	9.37	35.52							
TP 21			1.28	34.20					
	9.18	43.42							
TP 22			0.82	42.60					
	0.65	43.25							
TP 21			9.00	34.25	29				
	1.46	35.71							
TP 20			9.55	26.14	15				
	0.75	26.91							
TP 19			9.34	17.57	55				
	0.73	18.30							
TP 18			9.58	08.72					
	1.31	10.03							
TP 17			9.43	00.60	00.58				
	0.63	101.23							
TP 16			9.37	91.86	91.83				
	1.20	93.06							
TP 15			8.54	84.52	49				
	0.96	85.48							
TP 14			10.15	75.33	30				
	0.92	76.25							

STA	+	11'E 5176.25	-	ELEV	
TP 13	0.71	66.07	10.89	65.36	65.34
TP 12	0.95	57.45	9.57	56.50	56.48
TBM TP 11			8.40	49.05	5049.03
TBM TP 22	ADJUSTED			+0.02 EOC	
	9.49	52.08		5142.59	
TP 23	9.32	60.73	0.67	51.41	
TP 24	9.44	69.83	0.34	60.39	
TP 25	8.79	77.84	0.78	69.05	
TP 26	8.51	85.33	1.02	76.82	
TP 27	7.98	92.32	0.99	84.34	
TP 28	8.82	97.69	3.45	88.87	
TP 29	9.24	5205.80	1.13	96.56	
TP 30	9.24	14.75	0.29	05.51	

STA	+	HI	-	ELEV					
TBM TP 31		5214.75							
	1.88	14.52	2.11	12.64					
TP 30			9.00	05.52	05.51				
	0.18	05.70							
TP 29			9.13	96.57	96.56				
	1.27	5197.84							
TP 28			8.96	88.88	88.91				
	3.09	91.97							
TP 27			7.63	84.34	84.34				
	1.06	85.40							
TP 26			8.59	76.81	76.82				
	1.05	77.86							
TP 25			8.81	69.05	68.65				
	1.07	70.12							
TP 24			9.72	60.40	60.39				
	0.71	61.11							
TP 23			9.68	51.43	51.41				
	0.99	52.42							
TBM TA 22			9.81	42.61	42.59				
				+0.02 EOC					
TBM TP 31				5212.63					
	7.95								
		20.58							

STA	+	HI	-	ELEV
		5220.58		
TP 32			0.91	19.67
	7.78	27.45		
TP 33			1.63	25.82
	7.62	33.44		
TP 34			3.93	29.51
	4.48	33.99		
TP 35			4.69	29.30
	5.44	34.74		
TP 36			2.57	32.17
	5.96	38.13		
TP 37			3.86	34.27
	2.42	36.69		
TBM				
TP 38			1.81	5234.88
	2.22	37.10		
TP 37			2.83	34.27
	3.78	38.05		
TP 36			5.88	32.17
	2.54	34.71		
TP 35			5.41	29.30
	4.35	33.65		
TP 34			4.13	29.52
	2.22	31.74		
TP 33			5.90	25.84
	1.57	27.41		



S115 ○
 S114 ○
 S113 ○

○ S116

+ ON CONC. BY N. WELL S-115

STA	+	HI 5227.41	-	ELEV				
TP 32			7.74	19.67	19.67			
TBM TP 31	2.28	21.95	9.34	12.61	12.63			
				-0.02	00			
TBM TP 38				5234.89				+ ON WELL S-115
S 113	7.46	42.35	7.54	34.81				HAT 9.50 32.85
S 114			7.74	34.61				HAT 9.51 32.84
S 115			5.89	36.46				HAT 7.75 34.60
S 116			0.46	41.89				HAT 3.53 38.82
TBM				34.89				
S 113	7.74	42.63	7.82	34.81	.81			HAT 9.78 32.85
S 114			8.01	34.62	.61			HAT 9.79 32.84
S 115			6.16	36.47	.46			HAT 8.03 34.60
S 116			0.74	41.89	.89			HAT 3.82 38.81

Closure Log

New Closure

From: AJAX

To: V175
L1 fixed 7/12/94 21:05:45 00003025.SSF
Slope (m): 8117.404 40°15'51.77094" N AJAX1932.DAT
Total (m): 8117.404 112°23'46.45109" W V1751933.DAT
1531.9622 m

To: S116
L1 fixed 10/18/94 17:51:30 00003122.SSF
Slope (m): 6922.783 40°18'39.85988" N S1162911.DAT
Total (m): 15040.187 112°20' 6.20668" W V1752912.DAT
1586.0866 m

To: AJAX
L1 fixed 10/18/94 16:29:45 00003127.SSF
Slope (m): 7346.688 40°15'51.77071" N S1162911.DAT
Total (m): 22386.875 112°23'46.45138" W AJAX2911.DAT
1531.9581 m

Closed

Precision (ppm): 0.4725
Errors (m) X: -0.0068 Y: 0.0014 Z: -0.0080

New Closure

From: AJAX

To: V175
L1 fixed 7/12/94 21:05:45 00003025.SSF
Slope (m): 8117.404 40°15'51.77094" N AJAX1932.DAT
Total (m): 8117.404 112°23'46.45109" W V1751933.DAT
1531.9622 m

To: S115
L1 fixed 10/18/94 17:51:30 00003087.SSF
Slope (m): 6819.867 40°18'37.50631" N S1152911.DAT
Total (m): 14937.271 112°20'12.43935" W V1752912.DAT
1584.4264 m

To: AJAX
L1 fixed 10/18/94 16:29:45 00003092.SSF
Slope (m): 7191.331 40°15'51.77065" N S1152911.DAT
Total (m): 22128.602 112°23'46.45149" W AJAX2911.DAT
1531.9634 m

Closed

Precision (ppm): 0.5854
Errors (m) X: -0.0113 Y: -0.0025 Z: -0.0059

New Closure

From: AJAX

To: V175
L1 fixed 7/12/94 21:05:45 00003025.SSF
Slope (m): 8117.404 40°15'51.77094" N AJAX1932.DAT
Total (m): 8117.404 112°23'46.45109" W V1751933.DAT
1531.9622 m

To: S114
Iono free fixed 10/18/94 17:51:30 00003060.SSF
Slope (m): 6853.609 40°18'36.76022" N S1142911.DAT
Total (m): 14971.014 112°20'11.32100" W V1752912.DAT

1583.8539 m

To: AJAX Iono free fixed 10/18/94 16:29:45 00003066.SSF
 Slope (m): 7193.629 40°15'51.77044" N S1142911.DAT
 Total (m): 22164.643 112°23'46.45129" W AJAX2911.DAT
 1531.9545 m

Closed

Precision (ppm): 0.8042
 Errors (m) X: -0.0060 Y: -0.0019 Z: -0.0167

 New Closure

From: AJAX

To: V175 L1 fixed 7/12/94 21:05:45 00003025.SSF
 Slope (m): 8117.404 40°15'51.77094" N AJAX1932.DAT
 Total (m): 8117.404 112°23'46.45109" W V1751933.DAT
 1531.9622 m

To: S113 L1 fixed 10/18/94 17:51:30 00003107.SSF
 Slope (m): 6887.142 40°18'36.02560" N S1132911.DAT
 Total (m): 15004.547 112°20'10.20620" W V1752912.DAT
 1583.9251 m

To: AJAX L1 fixed 10/18/94 16:29:45 00003112.SSF
 Slope (m): 7196.292 40°15'51.77058" N S1132911.DAT
 Total (m): 22200.839 112°23'46.45152" W AJAX2911.DAT
 1531.9575 m

Closed

Precision (ppm): 0.7110
 Errors (m) X: -0.0108 Y: 0.0006 Z: -0.0115

 New Closure

From: S115

To: S116 L1 fixed 10/18/94 14:59:15 00003050.SSF
 Slope (m): 164.150 40°18'37.48807" N S1152911.DAT
 Total (m): 164.150 112°20'12.67154" W S1162911.DAT
 1581.0578 m

To: S113 L1 fixed 10/18/94 14:59:15 00003055.SSF
 Slope (m): 151.396 40°18'36.00746" N S1132911.DAT
 Total (m): 315.547 112°20'10.43827" W S1162911.DAT
 1580.5562 m

To: S114 L1 fixed 10/18/94 15:01:30 00003142.SSF
 Slope (m): 34.752 40°18'36.74236" N S1142911.DAT
 Total (m): 350.298 112°20'11.55333" W S1132911.DAT
 1580.4836 m

To: S115 L1 fixed 10/18/94 15:00:45 00003035.SSF
 Slope (m): 35.032 40°18'37.48818" N S1142911.DAT
 Total (m): 385.331 112°20'12.67150" W S1152911.DAT
 1581.0442 m

Closed

Precision (ppm): 36.5775

Errors (m) X: 0.0056 Y: 0.0114 Z: -0.0062

```

1      National Geodetic Survey,   Retrieval Date = MARCH 18, 1994
LP0274 *****
LP0274 DESIGNATION - AJAX
LP0274 PID - LP0274
LP0274 STATE/COUNTY- UT/TOOELE
LP0274 USGS QUAD - SAINT JOHN
LP0274
LP0274 HORZ DATUM - NAD 83
LP0274 VERT DATUM - NAVD 88
LP0274
LP0274 POSITION - 40 15 51.81108(N) 112 23 46.73220(W) ADJUSTED
LP0274 83 minus 27 - -00.20501 +02.81677 ADJUSTED
LP0274
LP0274 HEIGHT - 1543.779 (meters) 5064.88 (feet) ADJUST
LP0274 88 minus 29 - +1.16 UNADJ DIF
LP0274 *****
LP0274 LAPLACE CORR- 0.83 DEFLEC93
LP0274 GEOID HEIGHT- -17.48 GEOID93
LP0274 MODELED GRAV- 979,690.6 NAVD88
LP0274
LP0274 HORZ ORDER - THIRD
LP0274 VERT ORDER - FIRST CLASS 1
LP0274
LP0274.The horizontal position was established by classical geodetic methods
LP0274.and adjusted by the National Geodetic Survey in July 1986.
LP0274
LP0274.The orthometric height was determined by differential leveling
LP0274.and adjusted by the National Geodetic Survey in June 1991.
LP0274
LP0274.The Laplace correction was computed from DEFLEC93 derived deflections.
LP0274
LP0274.The geoid height was determined by GEOID93.
LP0274
LP0274.The modeled gravity was interpolated from observed gravity values.
LP0274
LP0274; North East Scale Converg.
LP0274;SPC UT C - 2,214,768.117 423,763.115 0.99992685 -0 34 27.0 MI
LP0274;UTM 12 - 4,458,037.965 381,270.013 0.99977353 -0 54 09.2 MI
LP0274
LP0274: Primary Azimuth Mark Grid Az
LP0274:SPC UT C - STOOKEY 262 39 33.9
LP0274:UTM 12 - STOOKEY 262 59 16.1
LP0274
LP0274 |-----|
LP0274 | Pid Reference Object Distance Geod. AZ |
LP0274 | LP0458 STOOKEY APPROX.12.6 KM 2620506.9 |
LP0274 |-----|
LP0274
LP0274_STATION MARK IS A SURVEY DISK
LP0274_WITH SETTING: SET IN TOP OF CONCRETE MONUMENT (ROUND)
LP0274_THE MARK IS STAMPED: AJAX 1955
LP0274_STABILITY: C = MAY HOLD, BUT OF TYPE COMMONLY SUBJECT TO
LP0274+STABILITY: SURFACE MOTION
LP0274
LP0274 HISTORY - Year Condition Recov. By
LP0274 HISTORY - 1955 STATION MONUMENTED US GEOLOGICAL SURVEY
LP0274 HISTORY - 1970 GOOD NATIONAL GEODETIC SURVEY
LP0274 HISTORY - 1971 GOOD US GEOLOGICAL SURVEY
LP0274

```


LP0274

STATION DESCRIPTION

LP0274

LP0274'DESCRIBED BY NATIONAL GEODETIC SURVEY 1970

LP0274'13.55 MILES SOUTH ALONG THE UNION PACIFIC RAILROAD FROM AN ASPHALT

LP0274'ROAD CROSSING AT STOCKTON, 285 FEET WEST OF THE FIRST POLE SOUTH OF

LP0274'MILE POST 729, 356 FEET WEST OF THE WEST RAIL, 3.8 FEET WEST OF THE

LP0274'FENCE LINE, 63 1/2 FEET SOUTH OF THE SOUTH END OF A GATE, 2.0 FEET

LP0274'WEST OF A WITNESS POST, ABOUT 3 FEET HIGHER THAN THE TRACK AND IN THE

LP0274'TOP OF A CONCRETE POST PROJECTING 0.8 FOOT. SECTION 27, T 5W, R 6S.

LP0274

LP0274

STATION RECOVERY (1971)

LP0274

LP0274'RECOVERY NOTE BY US GEOLOGICAL SURVEY 1971

LP0274'LOCATED ABOUT 200 FT. E. OF STATE HIGHWAY 36, 72 FT. S. OF GATE AND 4

LP0274'FT. W. OF FENCE, IN SAGEBRUSH FLATS ALONG UNION PACIFIC RAILROAD

LP0274'RIGHT-OF-WAY FENCE, OPPOSITE OLD ---AJAX--- SECTION HOUSE FOUNDATIONS.

LP0274'

LP0274'TO REACH FROM INTERSECTION OF RD. INTO VERNON AND STATE HIGHWAY 36,

LP0274'DRIVE N. ON STATE HIGHWAY 36 FOR 12.6 MI. TO TRACK RD. RIGHT (E.),

LP0274'GO E. ABOUT 200 FT. TO GATE, TURN S. ALONG W. SIDE OF FENCE FOR 72

LP0274'FT. TO STATION.

LP0274'

LP0274'STATION MARK--BRONZE TABLET STAMPED ---AJAX 1955--- SET IN AN 8 IN.

LP0274'CONCRETE FILLED TILE PROJECTING 6 IN. ABOVE GROUND.

LP0274'

LP0274'REFERENCE MARK NO. 1--CHISELED CROSS 4 FT. ABOVE GROUND ON S. SIDE

LP0274'OF SECOND CONCRETE POST S. OF GATE. (NOT RECOVERED).

LP0274'

LP0274'REFERENCE MARK NO. 2--CHISELED CROSS 4 FT. ABOVE GROUND ON N. SIDE

LP0274'OF CONCRETE POST. (NOT RECOVERED).

LP0274'

1 National Geodetic Survey, Retrieval Date = MARCH 18, 1994

LP0268 *****

LP0268 DESIGNATION - V 175

LP0268 PID - LP0268

LP0268 STATE/COUNTY- UT/TOOELE

LP0268 USGS QUAD - SAINT JOHN

LP0268

LP0268 HORZ DATUM - NAD 83

LP0268 VERT DATUM - NAVD 88

LP0268

LP0268 POSITION - 40 20 11. (N) 112 24 33. (W) SCALED

LP0268 83 minus 27 - -00. +03. NADCON

LP0268

LP0268 HEIGHT - 1532.475 (meters) 5027.79 (feet) ADJUST

LP0268 88 minus 29 - +1.17 UNADJ DIF

LP0268 *****

LP0268 GEOID HEIGHT- -17.40 GEOID93

LP0268 MODELED GRAV- 979,697.4 NAVD88

LP0268

LP0268 VERT ORDER - FIRST CLASS 1

LP0268

LP0268.The horizontal coordinates were scaled from a topographic map and have
 LP0268.an estimated accuracy of +/- 6 seconds.

LP0268

LP0268.The orthometric height was determined by differential leveling
 LP0268.and adjusted by the National Geodetic Survey in June 1991.

LP0268

LP0268.The geoid height was determined by GEOID93.

LP0268

LP0268.The modeled gravity was interpolated from observed gravity values.

LP0268

LP0268_STATION MARK IS A BENCH MARK DISK

LP0268_WITH SETTING: SET IN TOP OF CONCRETE MONUMENT (ROUND)

LP0268_THE MARK IS STAMPED: V 175 1970

LP0268_STABILITY: C = MAY HOLD, BUT OF TYPE COMMONLY SUBJECT TO

LP0268+STABILITY: SURFACE MOTION

LP0268

LP0268 HISTORY - Year Condition Recov. By

LP0268 HISTORY - 1970 STATION MONUMENTED NATIONAL GEODETIC SURVEY

LP0268

LP0268 STATION DESCRIPTION

LP0268'DESCRIBED BY NATIONAL GEODETIC SURVEY 1970

LP0268'8.55 MILES SOUTH ALONG THE UNION PACIFIC RAILROAD FROM AN ASPHALT ROAD

LP0268'CROSSING AT STOCKTON, 55 1/2 FEET WEST OF MILE POST 734, AT THE

LP0268'CROSSING OF AN ASPHALT ROAD LEADING EAST AND AN ASPHALT ROAD WEST TO

LP0268'DUGWAY PROVING GROUND, 96.0 FEET WEST OF THE WEST RAIL, 165 FEET SOUTH

LP0268'OF THE CENTER LINE OF THE ROAD, 50 FEET EAST OF THE CENTER LINE OF

LP0268'STATE HIGHWAY 36, 1.4 FEET EAST OF A FENCE, 1.6 FEET SOUTH OF A

LP0268'WITNESS POST, ABOUT 4 FEET LOWER THAN THE TRACK, A DISK IN THE TOP OF

LP0268'A CONCRETE POST PROJECTING 0.4 FOOT. SECTION 33, T 5W, R 5S.

LP0269 *****

LP0269 DESIGNATION - W 175
 LP0269 PID - LP0269
 LP0269 STATE/COUNTY- UT/TOOELE
 LP0269 USGS QUAD - SAINT JOHN
 LP0269
 LP0269 HORZ DATUM - NAD 83
 LP0269 VERT DATUM - NAVD 88
 LP0269
 LP0269 POSITION - 40 19 23. (N) 112 24 22. (W) SCALED
 LP0269 83 minus 27 - -00. +03. NADCON
 LP0269
 LP0269 HEIGHT - 1534.027 (meters) 5032.89 (feet) ADJUST
 LP0269 88 minus 29 - +1.16 UNADJ DIF
 LP0269 *****
 LP0269 GEOID HEIGHT- -17.42 GEOID93
 LP0269 MODELED GRAV- 979,695.4 NAVD88
 LP0269
 LP0269 VERT ORDER - FIRST CLASS 1
 LP0269

LP0269.The horizontal coordinates were scaled from a topographic map and have LP0269.an estimated accuracy of +/- 6 seconds.

LP0269.The orthometric height was determined by differential leveling LP0269.and adjusted by the National Geodetic Survey in June 1991.

LP0269.The geoid height was determined by GEOID93.

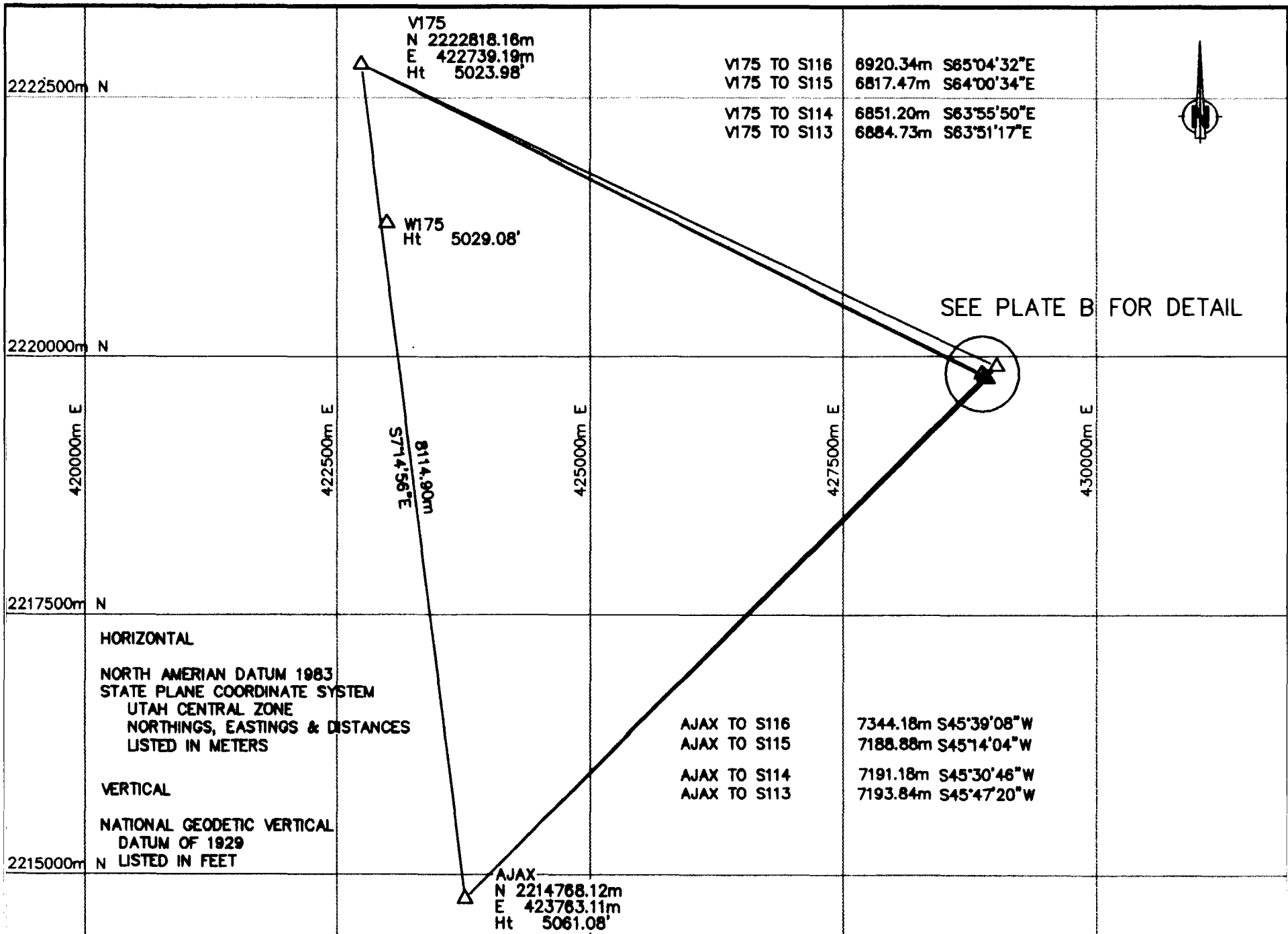
LP0269.The modeled gravity was interpolated from observed gravity values.

LP0269
 LP0269_STATION MARK IS A BENCH MARK DISK
 LP0269_THE MARK IS STAMPED: W 175 1970
 LP0269_STABILITY: D = MARK OF QUESTIONABLE OR UNKNOWN STABILITY

LP0269
 LP0269 HISTORY - Year Condition Recov. By
 LP0269 HISTORY - 1970 STATION MONUMENTED NATIONAL GEODETIC SURVEY

LP0269
 LP0269 STATION DESCRIPTION

LP0269'DESCRIBED BY NATIONAL GEODETIC SURVEY 1970
 LP0269'9.5 MILES SOUTH ALONG THE UNION PACIFIC RAILROAD FROM AN ASPHALT ROAD
 LP0269'CROSSING AT STOCKTON, 2 POLES NORTH OF MILE POST 733, IN THE TOP AND
 LP0269'1.0 FOOT EAST OF THE WEST END OF THE SOUTH ABUTMENT OF BRIDGE 733.05,
 LP0269'6.0 FEET WEST OF THE WEST RAIL AND ABOUT 1 FOOT LOWER THAN THE TRACK.
 LP0269'SECTION 4, T 5W, R 6S.



Origin: 2214376.824 N 419195.411 E

Scale: 1:50000

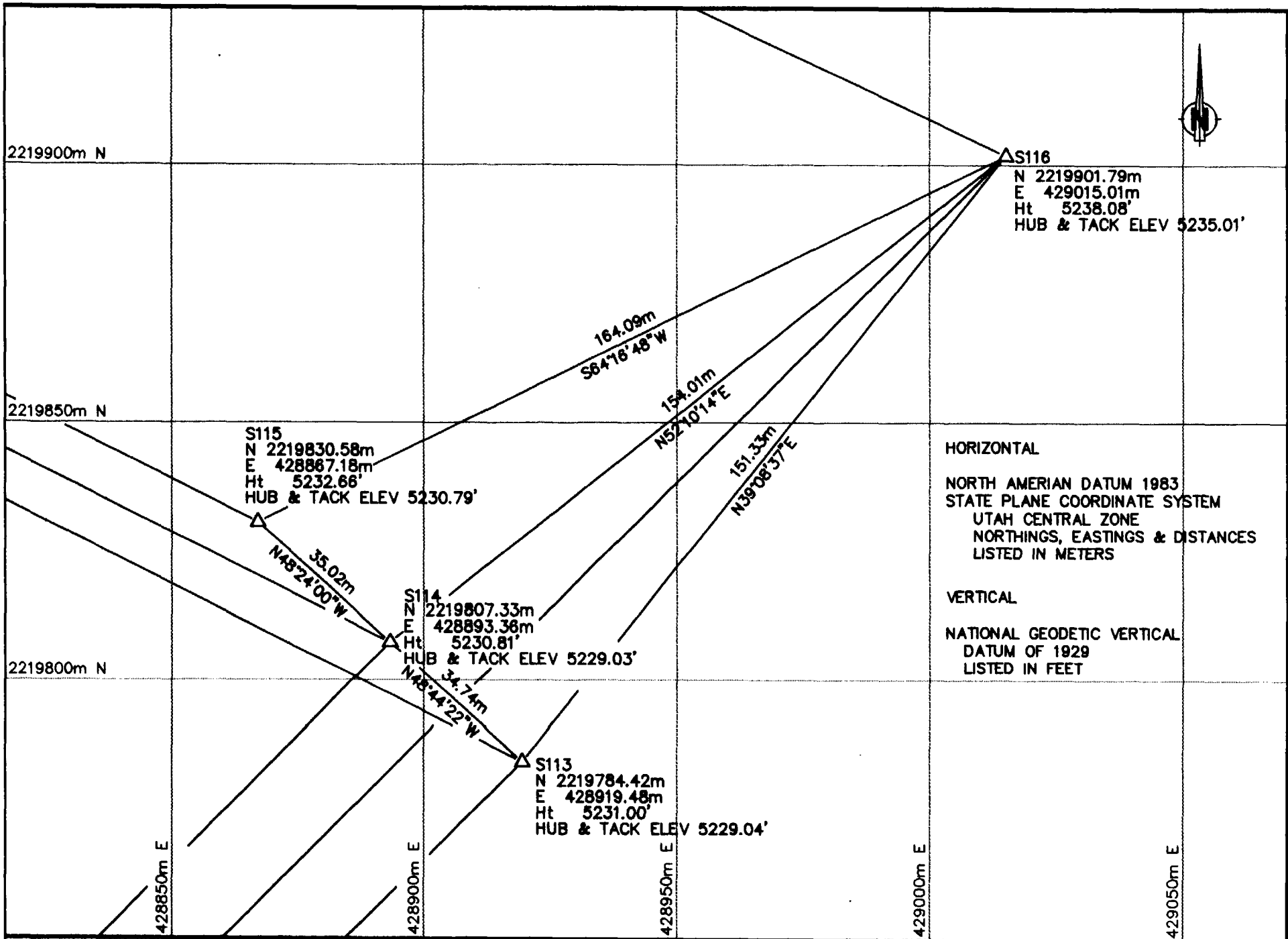
Rotation: 0°

SURVEY - TOOELE ARMY DEPOT - SOUTH AREA
 PLATE A

HILL, JAMISON & ASSOCIATES, INC.

Date: 2 NOV 1994

Job ID: 94-285



Origin: 2219750.340 N 428816.704 E

Scale: 1:1000

Rotation: 0°

SURVEY - TOOELE ARMY DEPOT - SOUTH AREA
PLATE B

HILL, JAMISON & ASSOCIATES, INC.

Date: 2 NOV 1994

Job ID: 94-265